

COLD-HOT PLATE

INNOVATION

Temperature from **-5°** to **+140° C**
continuously adjustable via display

BUILT-IN-MODELS

- plug-in ready
- remote cooling system

Function

Cold-Hot Plate for keeping dishes cold or warm at temperatures ranging from -5° to +140° C (at an ambient temperature of +24° C)

Sizes

GN1/1 330 x 530 mm GN2/1 660 x 530 mm
GN3/1 990 x 530 mm GN4/1 1320 x 530 mm
round Ø 480 mm, special dimensions on request

Surfaces

- Gorilla glass 2 mm (not for special dimensions)
9010 white or 9004 black
- ESG glass 4-6 mm RAL colours
- Stainless steel 1 mm
- Dekton 12 mm (artificial stone)
all Dekton decors available

Variants

- plug-in ready
- connected to a remote cooling system

Power Requirements

230 V – 50/60 Hz

GN1/1 850 W GN2/1 1520 W
GN3/1 2340 W GN4/1 3040 W
round, approx. 100 W

Refrigerant

plug-in R600a, GN4/1 R290
remote cooling system R134a / R404a / R507a


Scope of Delivery

Controller incl. 1.2 m cable
Supply line 1.6 m with Schuko plug

Important Information

Regarding installation, maintenance and care can be found in the user manual (e.g. supply and exhaust air)



Version A23  

in Bearbeitung 

COLD-HOT PLATE

INNOVATION

Temperature from **-5°** to **+140° C**
continuously adjustable via display

ON COUNTER MODELS

Function

Cold-Hot Plate for keeping dishes cold or warm at temperatures ranging from -5° to +140° C (at an ambient temperature of +24° C)

New Design 2021

- Stable stainless steel body with rounded feather edges
- Uniform design for Cold and Hot Plates
- Improved design thanks to supply and exhaust air from below
- Supply line from below, therefore the supply line can be routed to each side of the device

Sizes (Metal Body)

Height = 170 mm
GN1/1 345 x 545 mm GN2/1 675 x 545 mm

Surfaces

- Gorilla glass 2 mm (not for special dimensions) 9010 white or 9004 black
- ESG glass 4-6 mm RAL colours
- Stainless steel 1 mm

Models

Grounded stainless steel body or powder coated in RAL9005 black or RAL9010 white

Power Requirements

230 V – 50/60 Hz

GN1/1 850 W GN2/1 1520 W

Refrigerant

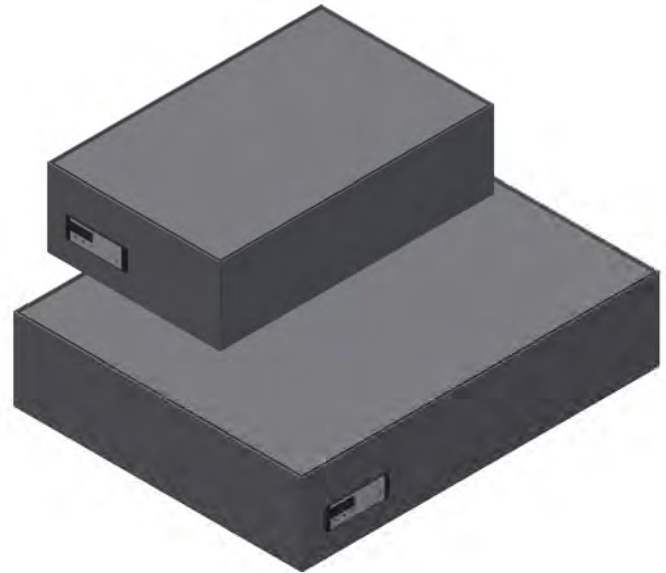
R600a

Scope of Delivery

Supply line 2 m
with Schuko plug and rubber plug

Important Information

Regarding installation, maintenance and care can be found in the user manual



WOODLINE COLD-HOT PLATE

**HOELLER
WOOD LINE**

Temperature from **-5°** to **+140° C**
continuously adjustable via display

ON COUNTER MODELS

Function

Cold-Hot Plate for keeping dishes cold or warm at temperatures ranging from -5° to +140° C (at an ambient temperature of +24° C)

New Design 2021

- Uniform design and external dimensions
- Corner connection of the wooden body with finger prongs
- Improved design thanks to supply and exhaust air from below
- Supply line from below, therefore the supply line can be routed to each side of the device

Sizes

Height = 170 mm GN1/1 440 x 645 mm

Surfaces

- Gorilla glass 2 mm (not for special dimensions) 9010 white or 9004 black
- ESG glass 4-6 mm RAL colours
- Stainless steel 1 mm

Models

Standard is solid oak – natural lacquered
other wood types on request

Power Requirements

230 V – 50/60 Hz

GN1/1 850 W

Refrigerant

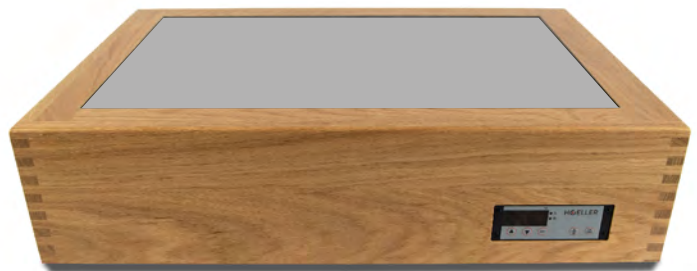
R600a

Scope of Delivery

Supply line 2 m
with Schuko plug and rubber plug

Important Information

Regarding installation, maintenance and care can be found in the user manual



Version A23  

in Bearbeitung 