

# COLD PLATE

# INNOVATION

Temperature from **-5°** to **+15° C**  
continuously adjustable via display

## BUILT-IN-MODELS

- plug-in ready
- remote cooling system

### Function

Cold Plate for keeping dishes cold at temperatures ranging from -5° to +15° C (at an ambient temperature of +24° C)

### Sizes

GN1/1 330 x 530 mm    GN2/1 660 x 530 mm  
GN3/1 990 x 530 mm    GN4/1 1320 x 530 mm  
round Ø 480 mm, special dimensions on request

### Surfaces

- Gorilla glass 2 mm (not for special dimensions)  
9010 white or 9004 black
- ESG glass 4-6 mm RAL colours
- Stainless steel 1 mm
- Dekton 12 mm (artificial stone)  
all Dekton decors available

### Variants

plug-in ready  
connected to a remote cooling system

### Power Requirements

230 V – 50/60 Hz

GN1/1 100 W    GN2/1 100 W  
GN3/1 100 W    GN4/1 350 W  
round, approx. 100 W

### Refrigerant

plug-in R600a, GN4/1 R290  
remote cooling system R134a / R404a / R507a

### Scope of Delivery

Controller incl. 1.2 m cable  
Supply line 1.6 m with Schuko plug

### Important Information

Regarding installation, maintenance and care can be found in the user manual (e.g. supply and exhaust air)



Version A23 CE NSF

in Bearbeitung UL

# COLD PLATE

**INNOVATION**

Temperature from **-5°** to **+15° C**  
continuously adjustable via display

## ON COUNTER MODELS

### Function

Cold Plate for keeping dishes cold at temperatures ranging from -5° to +15° C (at an ambient temperature of +24° C)

### New Design 2021

- Stable stainless steel body with rounded feather edges
- Uniform design for Cold and Hot Plates
- Improved design thanks to supply and exhaust air from below
- Supply line from below, therefore the supply line can be routed to each side of the device

### Sizes (Metal Body)

Height = 170 mm  
GN1/1 345 x 545 mm      GN2/1 675 x 545 mm

### Surfaces

- Gorilla glass 2 mm (not for special dimensions) 9010 white or 9004 black
- ESG glass 4-6 mm  
RAL colours
- Stainless steel 1 mm

### Models

Grounded stainless steel body or powder coated in RAL9005 black or RAL9010 white

### Power Requirements

230 V – 50/60 Hz

GN1/1 100 W      GN2/1 100 W

### Refrigerant

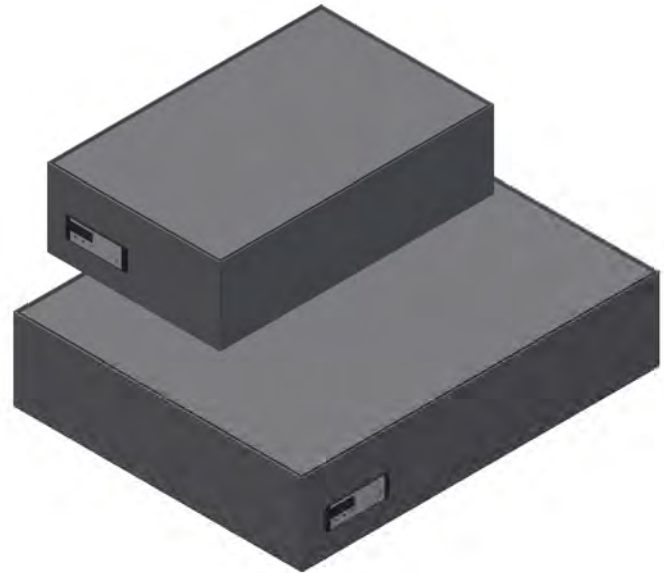
R600a

### Scope of Delivery

Supply line 2 m  
with Schuko plug and rubber plug

### Important Information

Regarding installation, maintenance and care can be found in the user manual



# WOODLINE COLD PLATE

**HOELLER  
WOOD LINE**

Temperature from **-5°** to **+15° C**  
continuously adjustable via display

## ON COUNTER MODELS

### Function

Cold Plate for keeping dishes cold at temperatures ranging from -5° to +15° C (at an ambient temperature of +24° C)

### New Design 2021

- Uniform design and external dimensions
- Corner connection of the wooden body with finger prongs
- Improved design thanks to supply and exhaust air from below
- Supply line from below, therefore the supply line can be routed to each side of the device

### Sizes

Height = 170 mm GN1/1 440 x 645 mm

### Surfaces

- Gorilla glass 2 mm (not for special dimensions) 9010 white or 9004 black
- ESG 4-6 mm RAL colours
- Stainless steel 1 mm

### Models

Standard is solid oak – natural lacquered, other wood types on request

### Power Requirements

230 V – 50/60 Hz

GN1/1 100 W

### Refrigerant

R600a

### Scope of Delivery

Supply line 2 m  
with Schuko plug and rubber plug

### Important Information

Regarding installation, maintenance and care can be found in the user manual



Version A23  

in Bearbeitung 