

HOT PLATE

INNOVATION

Temperature from **+20°** to **+140° C**
continuously adjustable via display

BUILT-IN-MODELS

- plug-in ready

Function

Hot Plate for keeping dishes warm
at temperatures from +20° to +140° C
(at an ambient temperature of +24° C)

Sizes

GN1/1 330 x 530 mm GN2/1 660 x 530 mm
GN3/1 990 x 530 mm GN4/1 1320 x 530 mm
round Ø 480 mm, special dimensions on request

Surfaces

- Gorilla glass 2 mm (not for special dimensions)
9010 white or 9004 black
- ESG 4-6 mm RAL colours
- Stainless steel 1 mm
- Dekton 12 mm (artificial stone)
all Dekton decors available

Variants

plug-in ready

Power Requirements

230 V – 50/60 Hz

GN1/1 850 W GN2/1 1520 W
GN3/1 2340 W GN4/1 3040 W
round, approx. 100 W

Scope of Delivery


Controller incl. 1.2 m cable
Supply line 1.6 m with Schuko plug

Important Information

Regarding installation, maintenance and care
can be found in the user manual



Version A23  

in Bearbeitung 

HOT PLATE

INNOVATION

Temperature from **+20°** to **+140° C**
continuously adjustable via display

ON COUNTER MODELS

Function

Hot Plate for keeping dishes warm
at temperatures ranging from +20° to +140° C

New Design 2021

- Stable stainless steel body with rounded feather edges
- Uniform design for Cold and Hot Plates
- Supply line from below, therefore the supply line can be routed to each side of the device

Sizes (Metal Body)

Height = 81 mm

GN1/1 345 x 545 mm GN2/1 675 x 545 mm

GN3/1 1005 x 545 mm

Special dimensions on request

Surfaces

- Gorilla glass 2 mm (not for special dimensions) 9010 white or 9004 black
- ESG glass 4-6 mm RAL colours
- Stainless steel 1 mm

Models

Grounded stainless steel body or
powder coated in RAL9005 black or
RAL9010 white

Power Requirements

230 V – 50/60 Hz

GN1/1 850 W GN2/1 1520 W

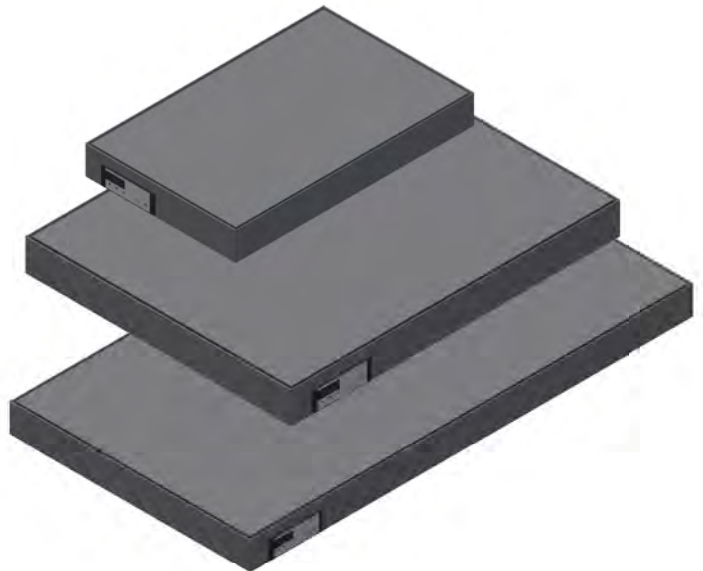
GN3/1 2340 W

Scope of Delivery

Supply line 2 m
with Schuko plug and rubber plug

Important Information

Regarding installation, maintenance and care
can be found in the user manual



WOODLINE HOT PLATE

Temperature from **+20°** to **+140° C**
continuously adjustable via display

**HOELLER
WOOD LINE**

ON COUNTER MODELS

Function

Hot Plate for keeping dishes warm
at temperatures from +20° to +140° C

New Design 2021

- Uniform design
- Corner connection of the wooden body
with finger prongs
- Supply line from below, therefore the supply line
can be routed to each side of the device

Sizes

Height = 90 mm GN1/1 440 x 645 mm

Surfaces

- Gorilla glass 2 mm (not for special
dimensions) 9010 white or 9004 black
- ESG glass 4-6 mm (RAL colours)
- Stainless steel 1 mm

Models

Standard is solid oak – natural lacquered,
other wood types on request

Power Requirements

230 V – 50/60 Hz

GN1/1 850 W

Scope of Delivery

Supply line 2 m
with Schuko plug and rubber plug

Important Information

Regarding installation, maintenance and care
can be found in the user manual



Version A23  

in Bearbeitung 